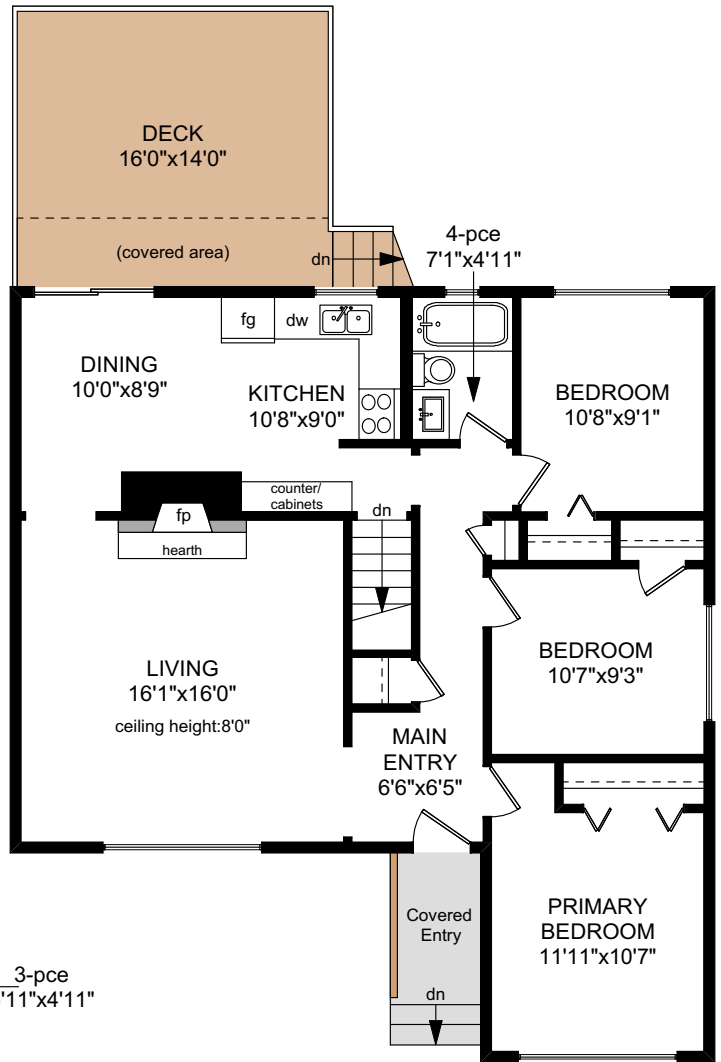
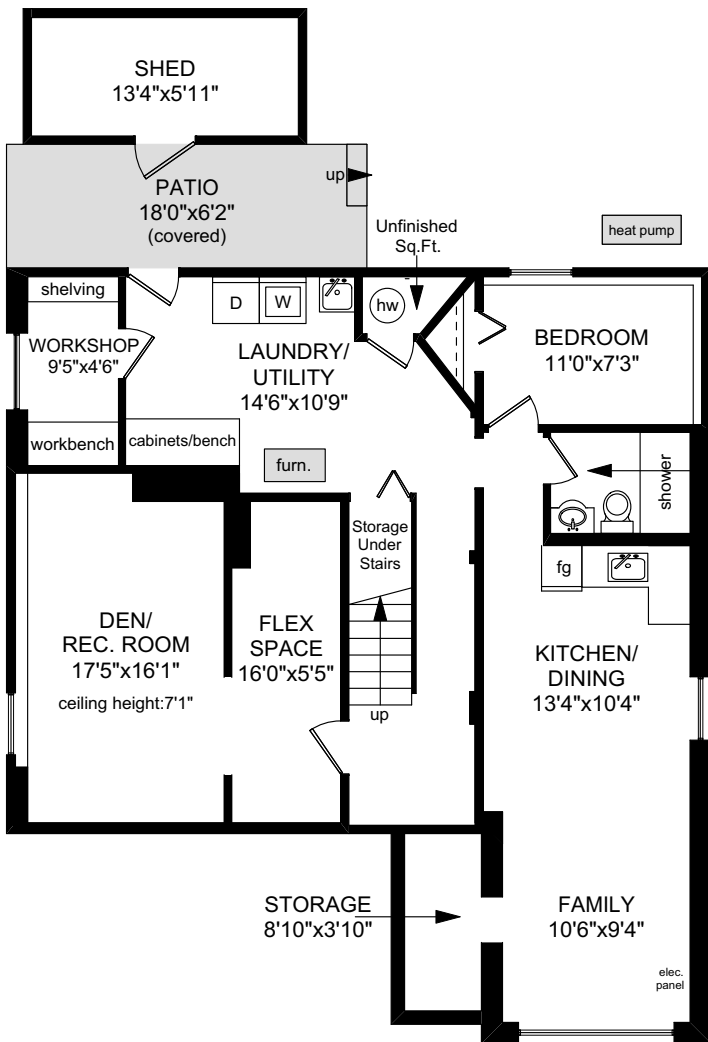


3810 MERRIMAN DRIVE

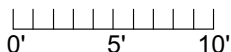
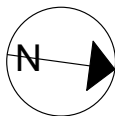
MAIN FLOOR
1115 SQ. FT.



LOWER FLOOR
1156 SQ. FT.

NOTE: The room name labels/sizes are for viewing reference only. They are not to be used for calculating total square footage.

| | FINISHED SQ. FT. | UNFINISHED SQ. FT. | TOTAL SQ. FT. |
|-------|------------------|--------------------|---------------|
| MAIN | 1115 | 0 | 1115 |
| LOWER | 1140 | 16 | 1156 |
| TOTAL | 2255 | 16 | 2271 |
| SHED | 0 | 96 | 96 |
| DECK | 0 | 224 | 224 |
| PATIO | 0 | 108 | 108 |



PREPARED FOR THE EXCLUSIVE USE OF
THE NEAL ESTATE GROUP WITH
RE/MAX GENERATION

MEASURED ON: 05/21/24
DRAWING FILE: 18910

Tafemeasure VICTORIA, B.C.
Ph. 2508838894
www.tafemeasure.com