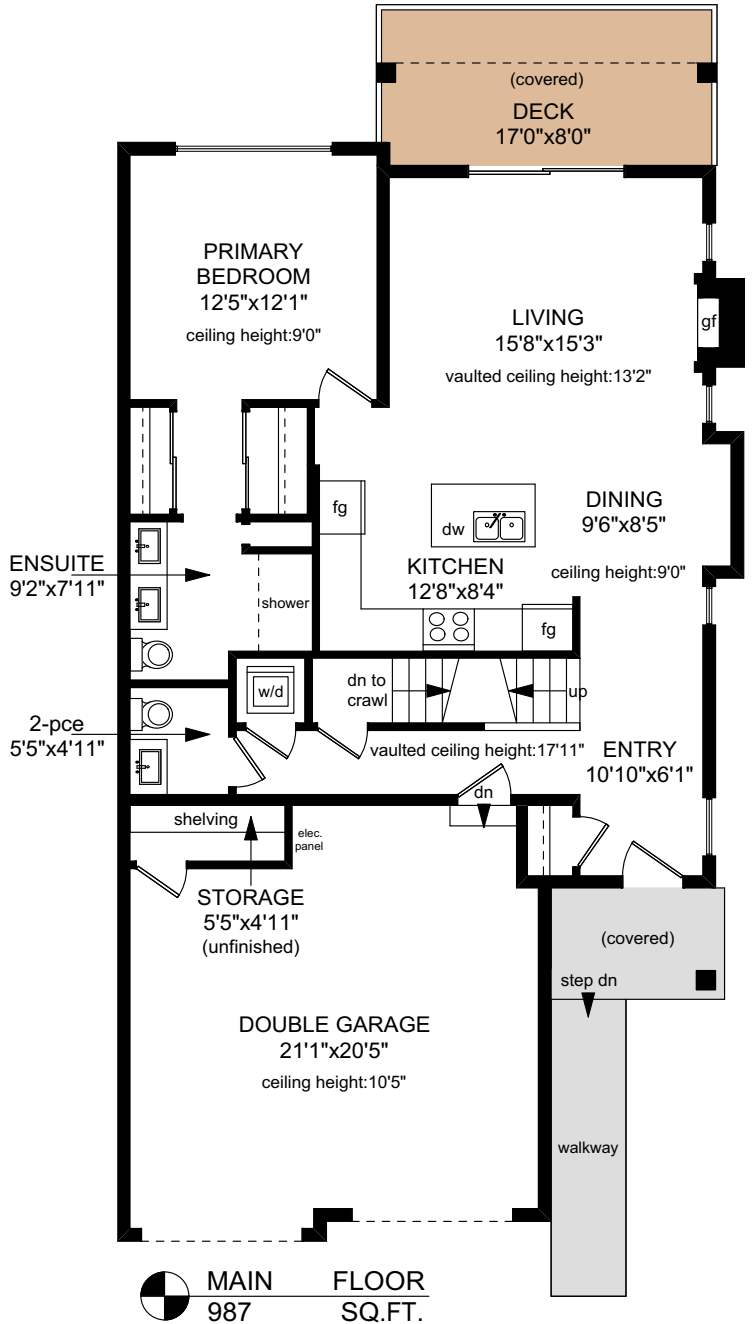
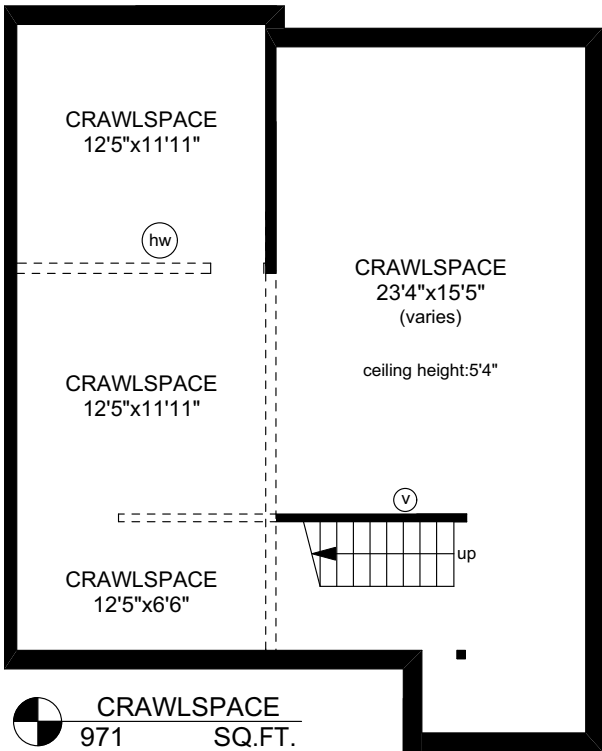
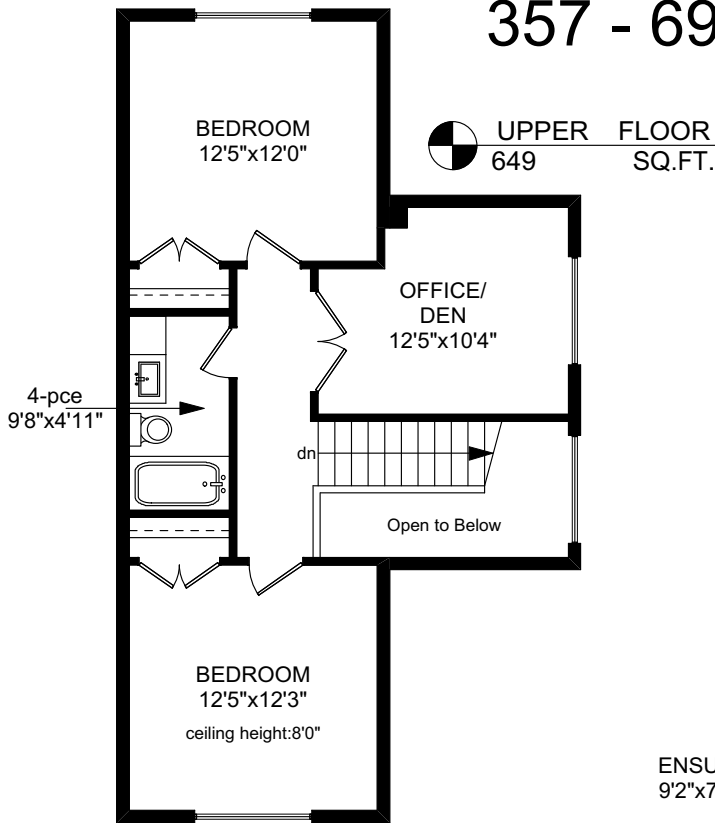
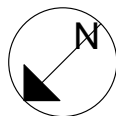


357 - 6995 NORDIN ROAD



NOTE: The room name labels/sizes are for viewing reference only. They are not to be used for calculating total square footage.

	FINISHED SQ. FT.	UNFINISHED SQ. FT.	TOTAL SQ. FT.
MAIN	987	0	987
UPPER	649	0	649
TOTAL	1636	0	1636
GARAGE	0	415	415
STORAGE	0	27	27
CRAWLSPACE	0	971	971
DECK	0	135	135



PREPARED FOR THE EXCLUSIVE USE OF
THE NEAL ESTATE GROUP WITH
RE/MAX GENERATION

MEASURED ON: 06/01/22
DRAWING FILE: 18304

Tafmeasure VICTORIA, B.C.
Ph. 883.8894
www.tafmeasure.com