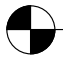
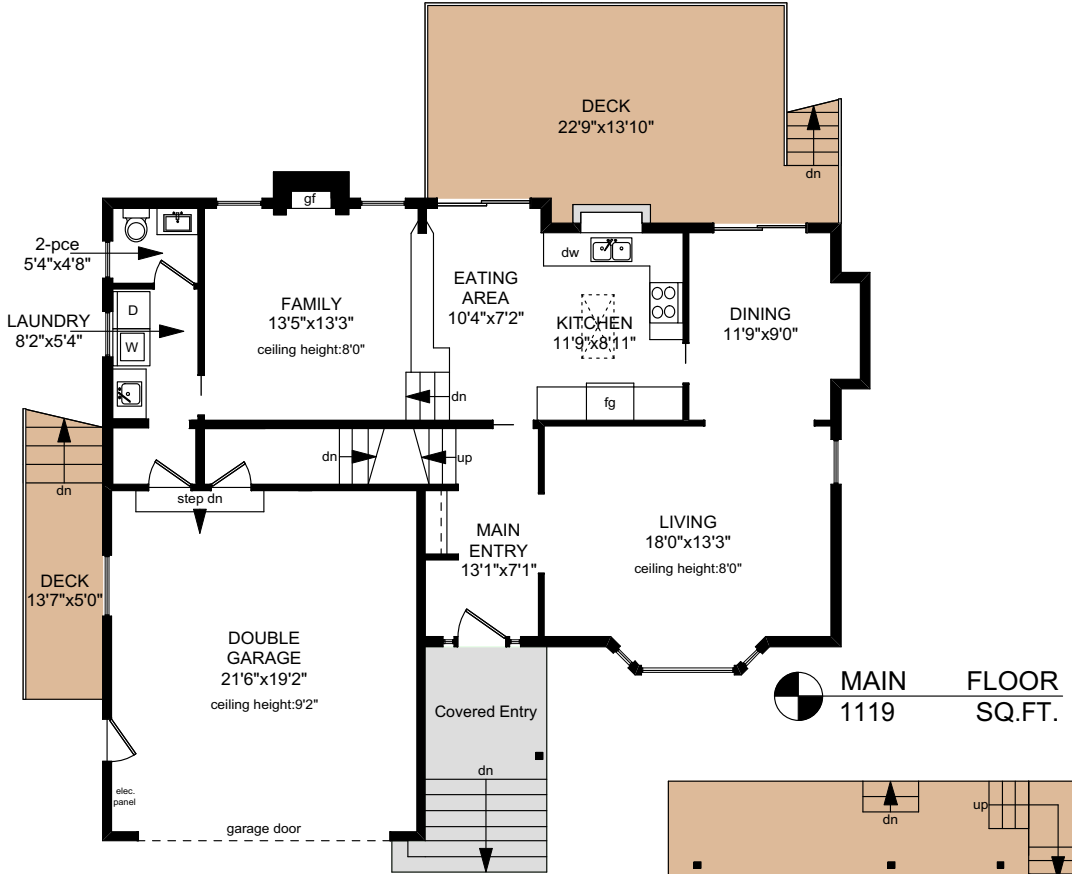
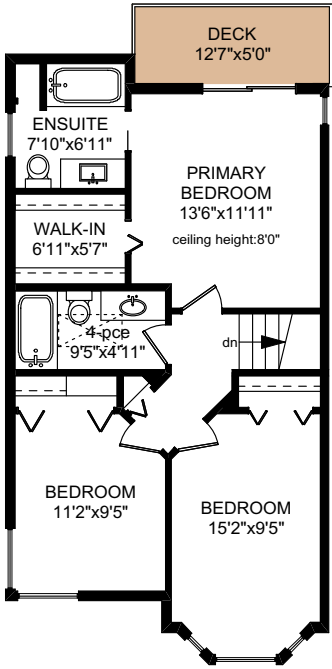

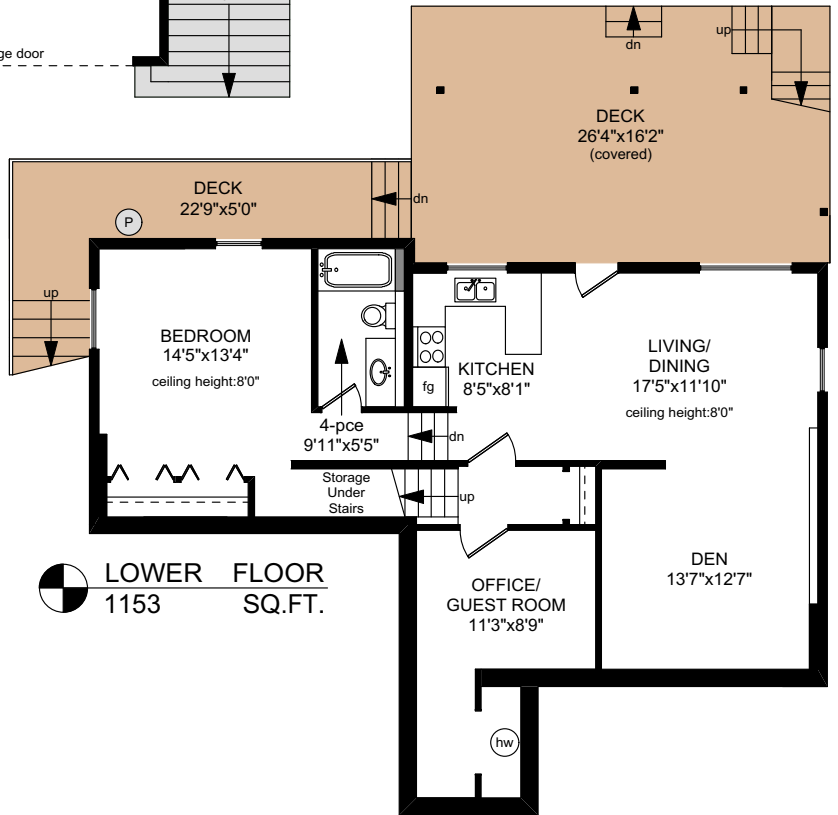



2114 TRIDENT PLACE

 UPPER FLOOR
713 SQ.FT.



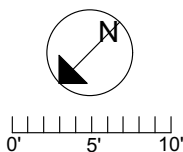
 MAIN FLOOR
1119 SQ.FT.



 LOWER FLOOR
1153 SQ.FT.

NOTE: The room name labels/sizes are for viewing reference only. They are not to be used for calculating total square footage.

	FINISHED SQ. FT.	UNFINISHED SQ. FT.	TOTAL SQ. FT.
MAIN	1119	0	1119
UPPER	713	0	713
LOWER	1153	0	1153
TOTAL	2985	0	2985
GARAGE	0	448	448
DECKS	0	971	971



PREPARED FOR THE EXCLUSIVE USE OF
THE NEAL ESTATE GROUP WITH
RE/MAX GENERATION

MEASURED ON: 04/22/24
DRAWING FILE: 18876

Tafmeasure VICTORIA, B.C.
Ph.2508838894
www.tafmeasure.com